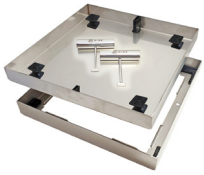


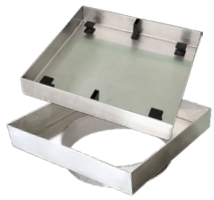
SKIMMER LIDS



ACCESS COVERS



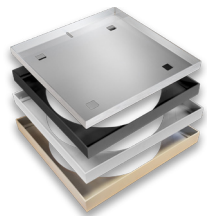
CONCRETE COVERS



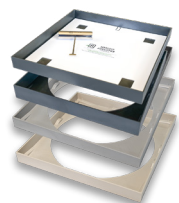
CONCRETE COVERS FORMING COLLAR



DRAIN COVERS



STAINLESS STEEL / POLYMER SKIMMER COVERS



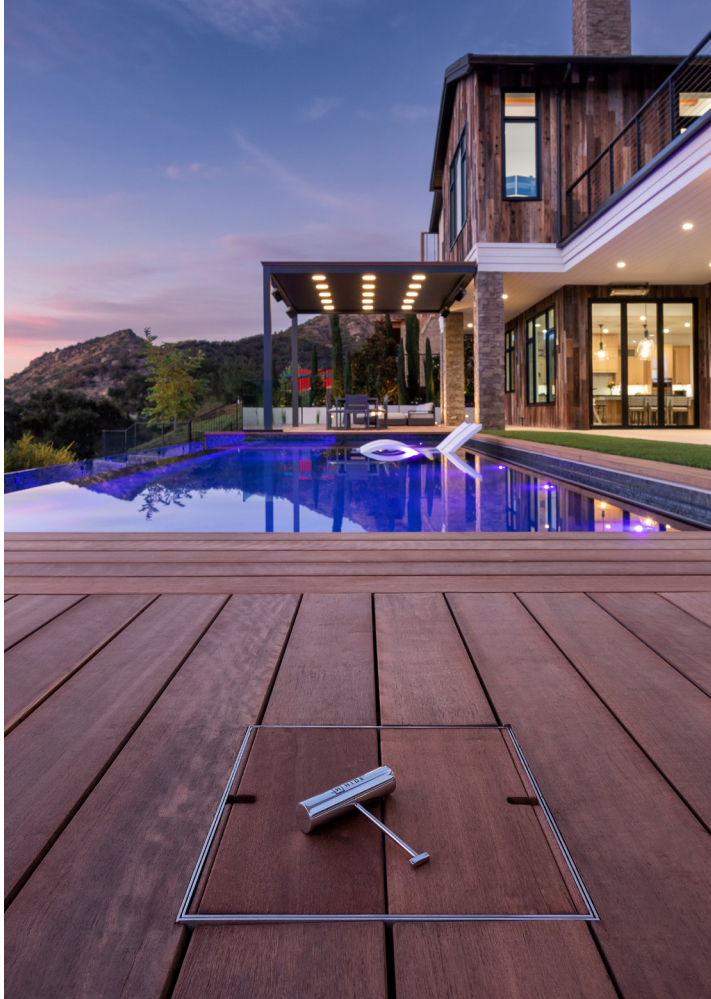
POLYMER COVERS



TILE LINEAR DRAIN COVERS



CONCRETE LINEAR DRAIN COVERS



Integrated,
seamless covers
that blend into
your landscape.

HIDE Skimmer Lids

HIDE PRODUCT CODES



SAFE.
SEAMLESS.
STUNNING.



BROCHURE



316 STAINLESS STEEL



HIDE RANGE



POLYMER



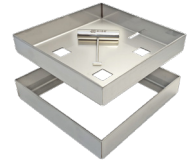
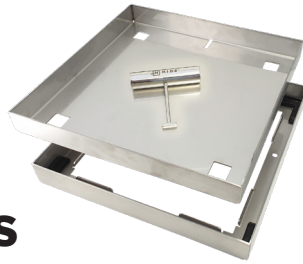
HIDE® Skimmer Lids conform to Australian Safety Standards

316L STAINLESS STEEL KITS

HIDE STAINLESS STEEL SKIMMER LIDS / ACCESS COVERS / DRAIN & CONCRETE COVERS



316 STAINLESS STEEL



SKIMMER LID KITS

AND EXTERNAL ACCESS COVERS

342

INLAY THICKNESS mm	PRODUCT CODE
8-11	HSL342-10
12-16	HSL342-15
15-22	HSL342-20
25-32	HSL342-30
35-42	HSL342-40
45-52	HSL342-50

ACCESS COVER KITS

EXTERNAL 316 STAINLESS STEEL

256

INLAY THICKNESS mm	PRODUCT CODE
8-11	HAC256-10
15-22	HAC256-20
25-32	HAC256-30
35-42	HAC256-40
45-52	HAC256-50
55-62	HAC256-60

306

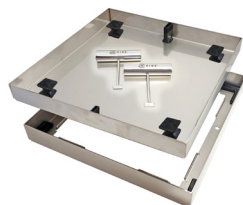
INLAY THICKNESS mm	PRODUCT CODE
8-11	HSL306-10
15-22	HSL306-20
25-32	HSL306-30
35-42	HSL306-40
45-52	HSL306-50
55-62	HSL306-60

206

INLAY THICKNESS mm	PRODUCT CODE
8-11	HAC206-10
15-22	HAC206-20
25-32	HAC206-30
35-42	HAC206-40
45-52	HAC206-50
55-62	HAC206-60

CONCRETE KITS

WET POUR CONCRETE INTO THE LID



RANGE

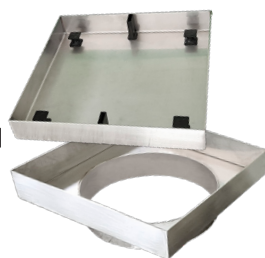
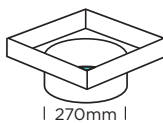
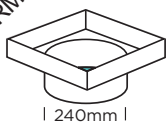
PRODUCT SIZE mm	PRODUCT CODE
156	HCON156-40
206	HCON206-40
256	HCON256-40
306	HCON306-40
342	HCON342-40

156

INLAY THICKNESS mm	PRODUCT CODE
8-11	HAC156-10
15-22	HAC156-20
25-32	HAC156-30
35-42	HAC156-40
45-52	HAC156-50
55-62	HAC156-60

EXTRA LARGE COVERS

MANHOLE SIZED LANDSCAPE COVER



CONCRETE KITS

(WITH NEW 240 & 270 EASY FORM COLLAR)

306

PRODUCT SIZE mm	PRODUCT CODE
306 (270 COLLAR)	HCONC306-270
306 (240 COLLAR)	HCONC306-240



EXTRA LARGE - MANHOLE SIZE

506 & 656

INLAY THICKNESS mm	PRODUCT CODE
15-22	HAC506-20
25-32	HAC506-30
15-22	HAC656-20
25-32	HAC656-30

COMBINATION KITS

HIDE STAINLESS STEEL LID & POLYMER EDGE PROTECTOR

COLOURS

ASH

BONE

CHARCOAL



316 STAINLESS
STEEL

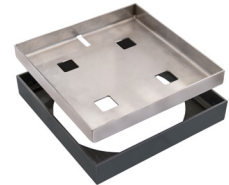
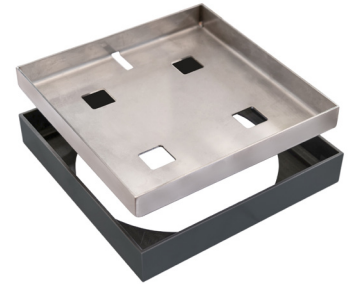


POLYMER

NEW
BOND FREE COMBO

342 SKIMMER LID KIT

INLAY THICKNESS mm	POLYMER COLOUR	PRODUCT CODE
15-22	ASH	HSSP342-20AS
	BONE	HSSP342-20BN
	CHARCOAL	HSSP342-20CH
25-32	ASH	HSSP342-30AS
	BONE	HSSP342-30BN
	CHARCOAL	HSSP342-30CH



206 ACCESS COVER KIT

INLAY THICKNESS mm	POLYMER COLOUR	PRODUCT CODE
15-22	ASH	HSSP206-20AS
	BONE	HSSP206-20BN
	CHARCOAL	HSSP206-20CH
25-32	ASH	HSSP206-30AS
	BONE	HSSP206-30BN
	CHARCOAL	HSSP206-30CH

BUNDLE AND SAVE

342 SKIMMER & 206 ACCESS

INLAY THICKNESS mm	POLYMER COLOUR	PRODUCT CODE
15-22	ASH	HSSP342/206-20AS
	BONE	HSSP342/206-20BN
	CHARCOAL	HSSP342/206-20CH
25-32	ASH	HSSP342/206-30AS
	BONE	HSSP342/206-30BN
	CHARCOAL	HSSP342/206-30CH



POLYMER KITS

POLYMER SKIMMER LID & POLYMER EDGE PROTECTOR

COLOURS

ASH

BONE

CHARCOAL

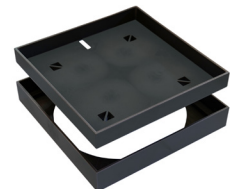


POLYMER

NEW
BOND FREE POLYMER

342 SKIMMER LID KIT

INLAY THICKNESS mm	POLYMER COLOUR	PRODUCT CODE
15-22	ASH	HPSL342-20AS
	BONE	HPSL342-20BN
	CHARCOAL	HPSL342-20CH
25-32	ASH	HPSL342-30AS
	BONE	HPSL342-30BN
	CHARCOAL	HPSL342-30CH



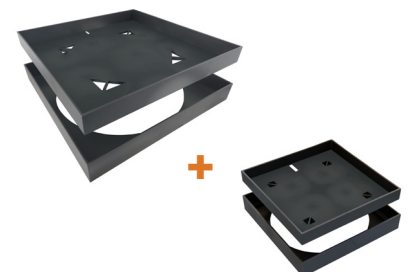
206 ACCESS COVER KIT

INLAY THICKNESS mm	POLYMER COLOUR	PRODUCT CODE
15-22	ASH	HPAC206-20AS
	BONE	HPAC206-20BN
	CHARCOAL	HPAC206-20CH
25-32	ASH	HPAC206-30AS
	BONE	HPAC206-30BN
	CHARCOAL	HPAC206-30CH

BUNDLE AND SAVE

342 SKIMMER & 206 ACCESS

INLAY THICKNESS mm	POLYMER COLOUR	PRODUCT CODE
15-22	ASH	HP342/206-20AS
	BONE	HP342/206-20BN
	CHARCOAL	HP342/206-20CH
25-32	ASH	HP342/206-30AS
	BONE	HP342/206-30BN
	CHARCOAL	HP342/206-30CH



OUTDOOR DRAINS

HIDE STAINLESS STEEL DRAIN COVERS

PATIO DRAIN COVERS

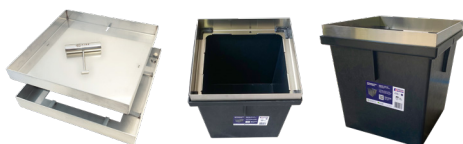
FITS OVER A EVERHARD PIT (NOT INCLUDED) OR MORTAR BED
WATER INTAKE TO SUIT 90 - 100mm PIPE



EVERHARD PIT

314

INLAY THICKNESS mm	PRODUCT CODE
8-11	HDC314-10
15-22	HDC314-20
25-32	HDC314-30
35-42	HDC314-40
CONCRETE WET-POUR DRAIN COVER	
42	HDCON314-40



LANDSCAPE DRAIN COVERS

FITS OVER A SERIES 300 EVERHARD PIT (PIT NOT INCLUDED)
WATER INTAKE TO SUIT 90 - 100mm PIPE

342

INLAY THICKNESS mm	PRODUCT CODE
8-11	HDC342-10
15-22	HDC342-20
25-32	HDC342-30
35-42	HDC342-40
CONCRETE WET-POUR DRAIN COVER	
42	HDCON342-40



HIGH FLOW DRAIN COVER



656

INLAY THICKNESS mm	PRODUCT CODE
20	HDC656-20



TILE LINEAR DRAIN COVERS

1210MM MODULAR LENGTHS



LINEAR LID KIT

1210mm straight modular lengths

KIT	INLAY THICKNESS	PRODUCT CODE
10	8-11	HDCL1210-10 (ED or SM)
20	15-22	HDCL1210-20 (ED or SM)
30	25-32	HDCL1210-30 (ED or SM)
40	35-42	HDCL1210-40 (ED)

MITRED CORNER KIT

2 x mitred 1210mm modular lengths

2420mm

KIT	INLAY THICKNESS	PRODUCT CODE
10	8-11	HDCLCNR1210-10 (ED or SM)
20	15-22	HDCLCNR1210-20 (ED or SM)
30	25-32	HDCLCNR1210-30 (ED or SM)
40	35-42	HDCLCNR1210-40 (ED)

FINISHING KIT

KIT	PRODUCT CODE
10	HDCLF1210-10 (ED or SM)
20	HDCLF1210-20 (ED or SM)
30	HDCLF1210-30 (ED or SM)
40	HDCLF1210-40 (ED)

EXTENDED BRIDGES (Optional)

KIT	PRODUCT CODE
x5	HDCLEXBR1210-ED
x5	HDCLEXBR1210-SM

END CAPS

KIT	PRODUCT CODE
10	HDCLEC-10 (ED or SM)
20	HDCLEC-20 (ED or SM)
30	HDCLEC-30 (ED or SM)
40	HDCLEC-40 (ED)

TILE EDGE TRIM (Optional)

1210mm Edge Protector finish

TRIM KIT	PRODUCT CODE
10	HDCLT1210-10
20	HDCLT1210-20
30	HDCLT1210-30

CONCRETE LINEAR COVER



1000mm modular lengths

KIT	INLAY THICKNESS	PRODUCT CODE
40	43	HCONDCL1000 - 40ED

CONCRETE LINEAR FORM WORK

(OPTIONAL)

1000mm modular lengths

KIT	INLAY THICKNESS	PRODUCT CODE
40	43	HCONDCLFK1000 - 40ED



INSTALLATION

Install HIDE lids in new landscapes or when refurbishing.

The simple design allows for simplistic and affordable installation, on-site by a contractor.

Every kit contains all the components for a no-fuss assembly, resulting in a superior finish. Just add your chosen inlay material.

SAFETY KEY



Replacement keys are available if lost or broken. They are not for individual sale, without proof of HIDE Kit purchase.

The Safety Key operates all HIDE lids & covers. This simple yet robust locking mechanism means HIDE Covers conform to Australian Pool Safety Standards as they cannot be lifted without the safety key.

Key is heavy-duty, welded and constructed from marine grade stainless steel.



HEAD OFFICE

26 Link Drive, Yatala, Qld, 4207

P: +61 7 3807 2551

E: admin@skimmerlids.com.au

W: www.skimmerlids.com.au

SALES

AUST/NZ - Gary Steele - M: 0427 270 560

NSW - Sarah-Jane Winston - M: 0447 981 121

VIC - Brett Dodge - M: 0499 260 254

PROUDLY MANUFACTURED BY:

SKIMMER LIDS



f p i h @hideskimmerlids